

Build Kansas Fund | Fiscal Year 2024 Application Package | Memo



To: Representative Troy Waymaster, Chair, Build Kansas Advisory Committee
Murl Riedel, Kansas Legislative Research Department
Shauna Wake, Office of the Kansas State Treasurer

From: Matthew A. Volz, PE, Executive Director, Kansas Infrastructure Hub

RE: Build Kansas Fund Application #2024-052-NoEDD

Date: June 17, 2024

Attached, please find an application made to the Build Kansas Fund by Osage County. The application packet includes the following items:

- Coversheet – provides a high-level overview of the application including a unique identification number, page 1 of 12 of the Build Kansas Fund Application Package.
- Build Kansas Fund Application – includes information submitted with the Build Kansas Fund Application, pages 2-8. Page 8 provides the table of funding sources.
- Attachments – Executive Summary and letters of support, pages 9-12.

Project Overview

Osage County seeks funding from the U.S. Department of Transportation for funding available through the Consolidated Rail Infrastructure and Safety Improvements (CRISI) Program for their Transload Facility Project which focuses on developing a new rail-served transload facility to support economic development in the rural farming community.

This opportunity is a discretionary BIL program with a local match requirement of 20% of the total project cost. The entity is requesting \$148,634.10 from the Build Kansas Fund and contributing \$49,544.70 of their own, in local match funds. This request has the potential to unlock \$792,715.20 in federal funds.

The federal deadline was May 28, 2024, and this Build Kansas Fund application was received on May 21, 2024.

Build Kansas Fund Steering Committee Recommendation

The Build Kansas Fund Steering Committee reviewed this application on June 12, 2024, following a successful completeness check. The Steering Committee **RECOMMENDS APPROVAL** of Build Kansas Funding to the Build Kansas Advisory Committee for final advice.

Build Kansas Fund | Fiscal Year 2024 Application Package | Coversheet



Build Kansas Fund Application Number	2024-052-NoEDD
Project Name	Osage County Kansas Transload Facility
Entity Type	Local Government
Economic Development District (EDD) Planning Commission	NoEDD Region
Infrastructure Sector(s)	Transportation
BIL Program	Consolidated Rail Infrastructure and Safety Improvements (CRISI) Grant Program
BIL Program Type	Discretionary
BIL Application Deadline	5/28/2024
Build Kansas Fund Request	\$148,634.10
Technical Assistance Received	General Yes
	BIL Application No
	Build Kansas Fund Application Yes
	Other (Brief Description): Provide general and application support to applicant
Application Notes	Build Kansas Fund contribution of \$148,634.10 will unlock \$792,715.20 in federal BIL funding. Applicant is contributing \$49,544.70 for a total project cost of \$792,715.20.

Steering Committee Funding Recommendation	June 12, 2024 Recommend
--	----------------------------------

Advisory Committee Funding Recommendation	DATE Recommend or Decline
--	------------------------------------

Completeness Review Data

Date Build Kansas Application Received:	5/21/2024
Date Of Completeness Check:	5/22/2024, 5/28/2024
Date Forwarded to Steering Committee:	6/6/2024

Title	Osage County Kansas	05/21/2024
	by Colleen Mendoza in Build Kansas Fund Fiscal Year 2024 Application	id. 46569622
	717 Topeka Ave Lyndon, Kansas 66451 United States 913-710-3775 cmendoza@osageco.org	

Original Submission	05/21/2024
----------------------------	------------

Score	n/a	
	Part 1: Applicant Information	
The name of the entity applying for the Build Kansas Fund:	Osage County Kansas	
Project Name:	Osage County Kansas Transload Facility	
Entity type:	County Government	
Applicant Contact Name:	Colleen Mendoza	
Applicant Contact Position/Title:	Osage County Kansas Economic Development Director	
Applicant Contact Telephone Number:	+17858295302	
Applicant Contact Email Address:	cmendoza@osageco.org	
Applicant Contact Address:	717 Topeka Ave	
Applicant Contact Address Line 2 (optional):		
Applicant Contact City:	Lyndon	
Applicant Contact State:	Kansas	

Applicant Contact Zip 66451
Code:

Is the Project Contact the same as the Applicant Contact? Yes

Part 2: Build Kansas Fund - Eligibility Criteria

Certify that you are pursuing a viable Bipartisan Infrastructure Law (BIL) funding opportunity for which your entity is eligible: Yes

Certify that the Bipartisan Infrastructure Law (BIL) funding opportunity you are pursuing has a required non-federal match component: Yes

What is the primary county that the project will occur in? Osage County

The Build Kansas Fund is intended to support Kansas-based infrastructure projects. Please provide a list of all the zip codes this project will be located in, along with an estimated percent [%] of the project located in that zip code. For example, if seeking funding for road infrastructure, provide a rough percent of the roads expected in each zip code:

[Zip Code Percentage.xlsx](#)

Part 3: Bipartisan Infrastructure Law (BIL) - Grant Application Information
Please Note: This information is related to the federal Bipartisan Infrastructure Law (BIL) funding opportunity to which you will apply. This is NOT information for the Build Kansas Match Fund.

Please enter the Bipartisan Infrastructure Law (BIL) funding opportunity title that the entity is applying for: FR-CRS-24-001 - FY 23-24 Consolidated Rail Infrastructure and Safety Improvements Grant Program

What is the funding agency for this Bipartisan Infrastructure Law (BIL) funding opportunity? U.S. Department of Transportation

What is the Assistance Listing Number (ALN) for this Bipartisan Infrastructure Law (BIL) funding opportunity? 20.325 -- Consolidated Rail Infrastructure and Safety Improvements

What is the application due date for this Bipartisan Infrastructure Law (BIL) funding opportunity? 5/28/2024

What is the federal fiscal year for this Bipartisan Infrastructure Law (BIL) funding opportunity? 2024

Enter the amount of funding being applied for, from the Bipartisan Infrastructure Law (BIL) funding opportunity: \$792,715.20

Enter the total project cost: \$990,894.00

Enter the required non-federal match percentage: 20.0

Part 4: Build Kansas Fund - Match Application Information

Enter the non-federal match amount being requested from the Build Kansas Fund: \$148,634.10

Is the project able to move forward with a lesser match amount than requested? No

If you are awarded less match than the amount requested, at what amount would your project NOT be able to move forward? \$148,634.10

Expected breakdown of funding sources to support the project: Enter the funding source and projected amount from each source to support this project:

[Kansas+DOT+table.xlsx](#)

Part 5: Build Kansas Fund - Means Test

Confirm that there are no available funding sources currently planned to go unused by your entity that could be leveraged for this project: Yes

Confirm there are no available American Rescue Plan Act (ARPA) or Coronavirus State & Local Fiscal Recovery Fund monies that could be used for this match: Yes

Confirm that you have explored other readily available funding sources (federal or non-federal) to be used for this match: Yes

Briefly describe your efforts to find other available funding sources for this project:

Over the last three years, Osage County local government has faced dramatic changes in their operating environment from a variety of external forces including COVID-19 downturn, recession, increased need for public services, recent pressures from state governments affecting local policy and budgets and a declining tax base. They are called to do more with less without marked funding increases. The County's General Fund is allocated for operations and maintenance of existing infrastructure, not for investment usage. Local grants are not applicable to a project of this magnitude.

Despite rural disadvantage, resource challenges, historic clerical inefficiencies and rising costs, the 2022 newly elected board of commission shifted their mindsets to pro-growth and made important efforts to hire an Economic Development Director in 2023 to improve economic prosperity and population well-being.

As a strategic first step, the Economic Development Director partnered with Wichita Center for Economic Development and Business Research and organized a Vision Summit where the community aligned on strategies to strengthen Osage County Economic Competitiveness; Leverage proximity to markets, Grow Housing, Grow Revenue, Create Jobs, Foster Growth in Infrastructure and Business development.

In five short months, Osage County Economic Development boldly pursued the 2023 EDA Reconnect Plan Grant for eligible distressed communities in southern Osage county. Innovative projects with targeted solutions were put forth to bring positive and lasting change and held the potential to make a profound impact on our communities for generations to come. Unfortunately, Kansas projects were not awarded, however we received very encouraging feedback on our application and will pursue again if a second round of funding is announced in future.

We will continue to seek opportunities for funding the Osage County Transload Facility, however have exhausted resources at this time.

In partnership with Economic Development, the Osage County Commissioners contribute to local momentum by strengthening Osage County small rural communities by funding grant workshops, county-wide housing assessment to grow affordable housing, development of a Neighborhood Revitalization program to promote rehabilitation and new home construction and supporting Economic Development pursuit of MIH grant for new housing and bringing broadband fiber to Osage County enhancing connectivity; establishing a proactive Economic Development ecosystem.

Part 6: Additional Information

Please upload a copy of the Bipartisan Infrastructure Law (BIL) program application associated with this request OR a 2-page executive summary providing an overview of the project:

[Osage_County_Transload_Facility_CRISI_Grant_Executive_Summary_5.13.24.pdf](#)

[KDOT_Support_Letter_Request_Budget.pdf](#)

Provide any additional information about this project (optional):

Part 7: Terms and Conditions

Understanding of Fund Release Requirements: checked

Understanding of Use of Funds: checked

Understanding of Reporting Requirements: checked

Authority to Make Grant Application: checked

Persons and Titles: Colleen Mendoza
The following persons are responsible for making this Build Kansas Fund application.

Position/Title: Osage County Kansas Economic Development Director

Additional:

Position/Title:

Additional:

Position/Title:

Additional:

Position/Title:

Internal Form

Score n/a

Pre-Award Information:

Post-Award Information:

Deviation Report:

Source	Amount	
BIL Federal Funds (applied for)	\$ 792,715.20	80% Federal Share
Build Kansas Funds (non-federal match)	\$ 148,634.10	BKF and Osage Contribution combines for total of 20%
Additional Project Contribution (if applicable)	\$ 49,544.70	local cost share
TOTAL PROJECT COST	\$ 990,894.00	

Zip Code	% of project in zip code
66856	100% in Kansas

OSAGE COUNTY TRANSLOAD PROJECT

FY 2024 CRISI GRANT PROJECT

ABOUT THE PROJECT:

OSAGE COUNTY, KANSAS, in collaboration with neighboring COFFEY COUNTY, KANSAS, is preparing to apply for an FY 2024 FEDERAL RAILROAD ADMINISTRATION CONSOLIDATED RAIL INFRASTRUCTURE & SAFETY IMPROVEMENT (“CRISI”) Grant to develop a new rail-served transload facility to support economic development in the rural, farming communities they call home. The development of this transload facility will be key to ensuring economic competitiveness and environmental sustainability in the region, and initial estimates indicate that it will result in the shipment of up-to 6,000 railcars of freight per year, removing up to 24,000 trucks from Kansas highways each year!

The proposed transload facility [FLIP OVER TO SEE PROJECT MAP], will be developed to support local industries and to bolster development of the new mega-development of a \$1.9 billion chip factory just three miles to the south on US Highway 75. The transload facility will be located adjacent to the BNSF RAILWAY’S “Transcon” mainline, providing rapid connectivity with markets across the United States and, though access to various ports, worldwide.

The CRISI grant application will allow the OSAGE COUNTY to tap into a \$2+ billion pool of funding for restoration of rail service. The County is working with the NATIONAL RAIL CONSULTING GROUP to complete preliminary market and feasibility studies, as well as to apply for the CRISI grant at an estimated total project cost of \$15 million. The Federal match for this grant is up-to 80% of total project cost.



NEXT STEPS: GRANT APPLICATION

The development of this rail-served transload site in OSAGE COUNTY will have meaningful economic impacts on both the county and its adjoining region. Neighboring COFFEY COUNTY, who is working in collaboration with OSAGE COUNTY on this project, has worked diligently to secure multiple mega projects, including the development of a PANASONIC battery factory and an EMPSHIELD chip factory, both of which account for billions of dollars invested and the potential to employ thousands of residents. These anchor projects, combined with dozens of support industries, will be able to use the OSAGE COUNTY transload facility to keep trucks off the road and keep costs to a minimum.

The documented freight volume required to support these substantial manufacturing sites is in excess of 1.6 million tons per year, which is equivalent to 16,000 railcars of freight (or 48,000 semi truck loads!). The Osage County Transload is being designed to accommodate up-to one third of that volume per year, with sufficient room to expand should demand increase.

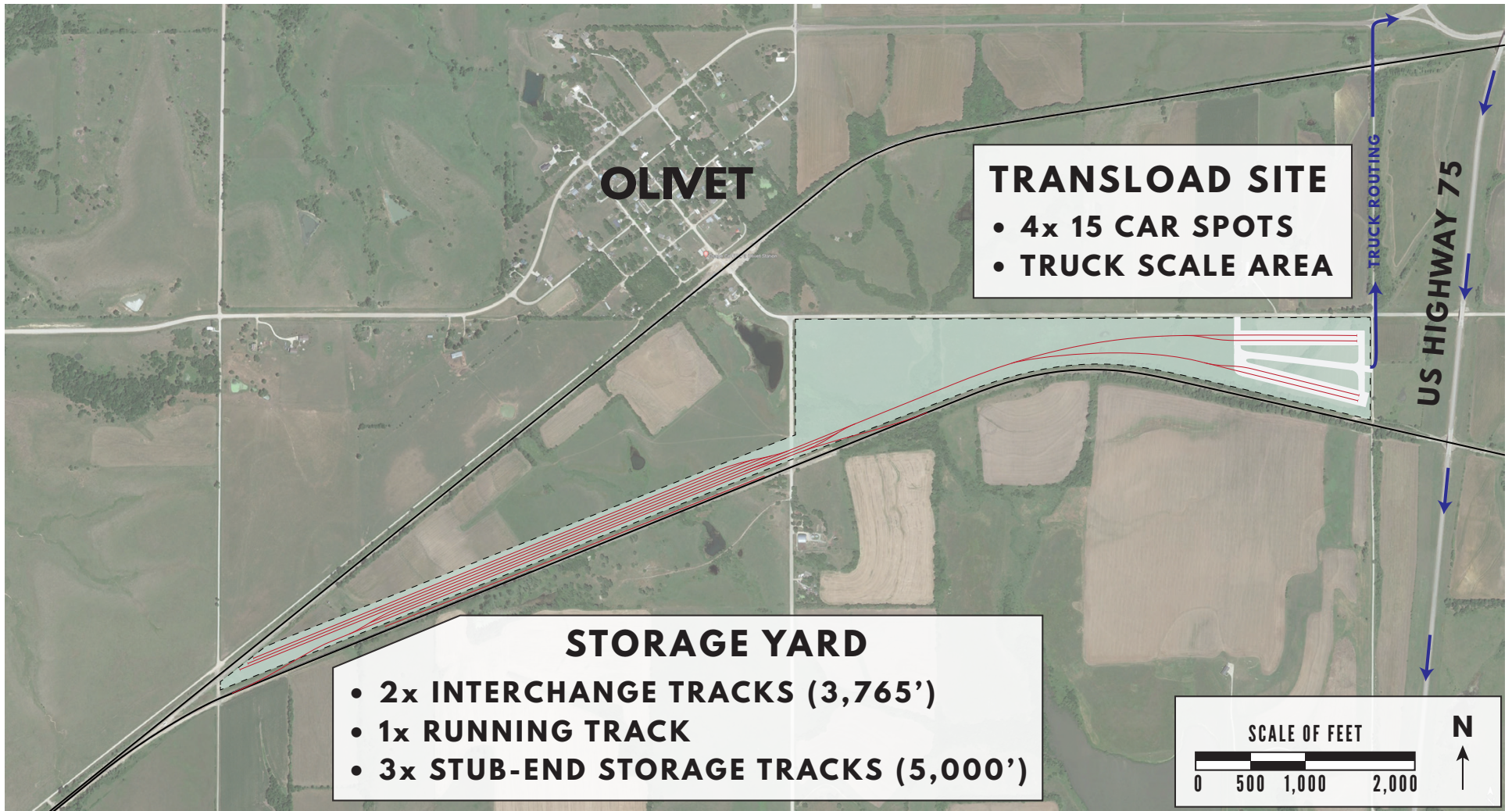
The time is now to pursue the development of this core economic development site, and the potential afforded by the CRISI program is the ideal conduit to make this rejuvenation a reality.

CONTACT:

Should you have any questions about this process, please feel free to contact either OSAGE COUNTY, COFFEY COUNTY, or our consultants.

- Colleen Mendoza • Economic Development Director, OSAGE COUNTY • 913.710.3775 • cmendoza@osageco.org
- Bobby Skipper • Economic Development Director, COFFEY COUNTY • 334. 301.8780 • bskipper@coffeycountyks.org
- Davidson Ward • Partner, NRCG • 414.801.4016 • dward@fmwsolutions.com

PROJECT MAP: OSAGE COUNTY TRANSLOAD DEVELOPMENT



PROJECT MAP:

The development of the Osage County Transload will require acquisition of an estimated 120 acres of land. The County is already in discussions with landowners in the region, and the initially-selected parcels, and a conceptual layout, is shown above.

A transload site is as much a railcar storage facility as it is a location for transferring bulk commodities from train-to-truck. The planned transload facility will consist of a storage yard and a transload yard. The storage yard will have two tracks for interchanging

with the BNSF RAILWAY, one running track, and three storage tracks, with a total track length of roughly 28,000 feet. A connecting track will enable efficient marshalling of railcars, as well as a connection to the transload site.

The transload site will enable up-to 45 cars to be “on spot” at one time, which will provide a conservative throughput of 6,000 railcars per year. Trucks will be able to easily access US Highway 75 without impacting nearby Olivet, as noted.

Dwight D. Eisenhower State Office Building
700 S.W. Harrison Street
Topeka, KS 66603-3745
Calvin E. Reed, Secretary



Phone: 785-296-3461
Fax: 785-368-7415
kdot#publicinfo@ks.gov
<http://www.ksdot.org>
Laura Kelly, Governor

May 21, 2024

The Honorable Amit Bose
Administrator of Federal Railroad Administration
1200 New Jersey Avenue SE
Washington, DC 20590

Re: Letter of Support for FY 2024 CRISI Program: Osage County Kansas Rail Transload Facility Project

Dear Administrator Bose,

At the request of Osage County, Kansas, I am writing this letter supporting Osage County's grant application under the Consolidated Rail Infrastructure and Safety Improvements (CRISI) Program to partially fund the Osage County Rail Transload Project. We support Osage County's request for funding of this facility that will support commerce and assure cost-effective, reliable, and safe rail service to properly serve the shippers and rural communities of East Central Kansas.

By helping to fund the proposed project, the FRA will enable Osage and Coffey Counties to grow. As a result, current jobs at industries utilizing rail service will be more secure, and improved rail infrastructure will assist the economic development efforts in this area to attract additional businesses, creating more direct and indirect jobs for East Central Kansas. We support FRA's careful review and approval of Osage County's application.

This rail project is not yet in the State Rail Plan. Should funding efforts be successful, the project can be added to the State Rail Plan in a reasonable timeframe through established amendment processes. The project is eligible for rail funding under section 22907 of title 49, United States Code [CRISI]. The State DOT is willing to carry out the project if funding is enacted and will include the project on the State Rail Plan once funding for the project is enacted.

For these reasons, we support your efforts to secure funding for this project.

Sincerely,

A handwritten signature in black ink, appearing to read "Calvin E. Reed". The signature is written in a cursive style with a large, sweeping "C" at the beginning.

Calvin E. Reed, P.E.
Secretary of Transportation
Director of Kansas Turnpike Authority

NATIONAL RAIL CONSULTING GROUP

HEADQUARTERS
2026 E. FIRST STREET
DULUTH, MN 55812



NATIONALRAILCONSULTING.COM

May 8th, 2024

Kansas Department of Transportation
Dwight D. Eisenhower State Office Building
700 S.W. Harrison Street
Topeka, KS 66603-3745

RE: Osage County Transload Rail Project

To Whom It May Concern,

Our firm, National Rail Consulting Group (“NRCG”) has been retained by the county of Osage, Kansas to do feasibility and preliminary studies regarding the planning and construction of a rail transload facility in southern Osage County. The County has covered the cost of these preliminary studies which has been instrumental in deeming the project feasible.

NRCG is now pursuing a federal grant to cover a portion of the cost of preliminary engineering (“PE”) and necessary National Environmental Policy Act (“NEPA”) reviews. The grant-writing process requires letters of support from significant private businesses and local government agencies such as yours. Find below the budget you require for such requests.

PE - \$478,836

Location Surveys, soil and water tests, ground investigations, and the preparation of plans, specifications, and estimates in advance of construction.

NEPA Process - \$512,058

Determining potential environmental impacts; coordinating with relevant agencies; involving the public; determining mitigation for unavoidable impacts; and documentation of the analysis and decisions through an environmental assessment or a categorical exclusion supported by the administrative record.

Total Project Estimate - \$990,894

If you have any questions, do not hesitate to reach out.

Sincerely,

/s/Chris Homco
Project Manager NRCG